

EA1544 Etere Integration with Aspera

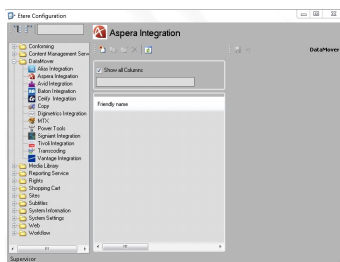
Etere supports Aspera, a software solution that provides WAN optimization for transferring files over large geographical distances (e.g. for publishing video on demand) including a variety of workflow tools to aid in file delivery.



(Etere logo)



(Aspera logo)



(Aspera integration)

Aspera is a software solution that provides WAN optimization for transferring files over large geographical distances (e.g. for publishing video on demand) including a variety of workflow tools to aid in file delivery. In Aspera, transfers are managed as either upload or download.

Etere is able to integrate with Aspera with **Etere MTX** to trigger jobs and get progress and status updates. Etere provides the capability of creating custom "Aspera integration" actions to request -via workflow- the execution of file transfers based on Aspera jobs for media files stored on Etere metadevices.

License:

Aspera Integration requires the **EA1544** license which supports the capability to request the execution of file transfers based on Aspera jobs for media files stored on **Etere metadevices**.



About Etere

Etere was established in 1987 and it is amongst the worldwide leaders in Media Asset Management (MAM) and channel-in-a-box software solutions. Etere Ecosystem framework of scalable solutions is used by media enterprises across the end-to-end workflow. Etere Ecosystem modular software including Media Asset Management (MAM), Airsales, Ad Insertion, Playout Automation, Broadcast Management System, HSM Archive, Nunzio Newsroom, Radio Automation, Video Editor, Broadcast Management System, Broadcast video over IP, IP Multiviewer and Live Censorship are built with an innovative architecture, offering the best flexibility and reliability in the market. Etere is headquartered in Singapore, with a dedicated 24/7 worldwide support centre.

E-mail: info@etere.com