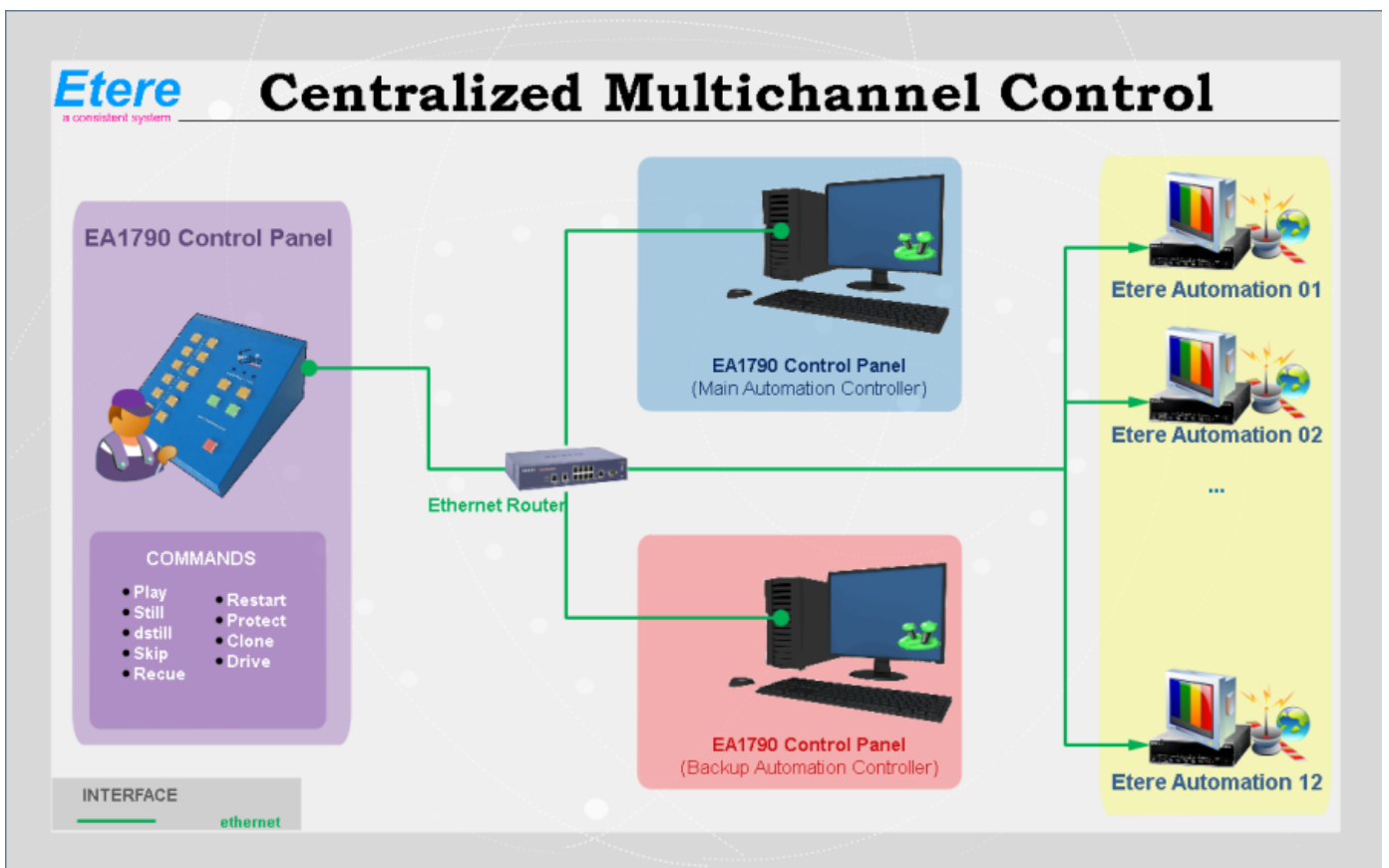


EA1790 ETERE CONTROL PANEL

The third release (C) of the automation control panel with new and improved functionalities.

The **Etere EA1790** is a device that allows to remote control up to 12 automations (6+6) at the same time from a single device, providing handy visual indicators and up to five command buttons to quick perform key actions onto the automation channels.



The EA1790 device controls the configured automations through two main/backup Etere Control Panels running simultaneously to ensure fault-tolerance and high-availability.

EA1790 is the ideal remote panel for operators due to its ergonomic, easy-to-use and quality buttons, characteristics that results into a reliable feedback from the operator broadcast.

EA1790 is the third version of the former ET0557 now made in Singapore

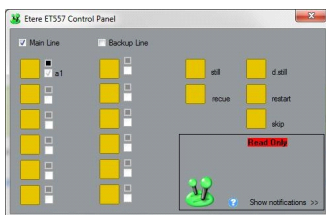
EA1790 ETERE CONTROL PANEL



Key Features

Among the key features provided by the ET0557-C device and its related Etere Control Panel software, the following can be mentioned:

- ◆ Multi-control, manage up to 12 automations
- ◆ Fault-tolerance, if one control panel fails, the second one continues sending commands
- ◆ Fast, owing to the use of ergonomic and quick-function buttons
- ◆ Versatility, assign user-defined commands to each button
- ◆ Simplicity, light buttons help to easily identify the functions



Quick Functions

Map buttons to specific automation commands to perform them in just one click:

- ◆ Play
- ◆ Restart
- ◆ Still
- ◆ Cue
- ◆ Clone



Technical Information

- ◆ Ethernet interfaces : 1
- ◆ Control connector : RJ-45
- ◆ Optical information : Light buttons
- ◆ Temperature field : From +5° C to +45° C
- ◆ Relative humidity : < 90 %
- ◆ AC supply : 220/110 V 47-63 Hz (automatic detect)
- ◆ AC consumption : < 50 VA
- ◆ Dimensions(mm) : 44 (H)x 483 (W)x 280 (D)
- ◆ Weight : 2.1 Kg