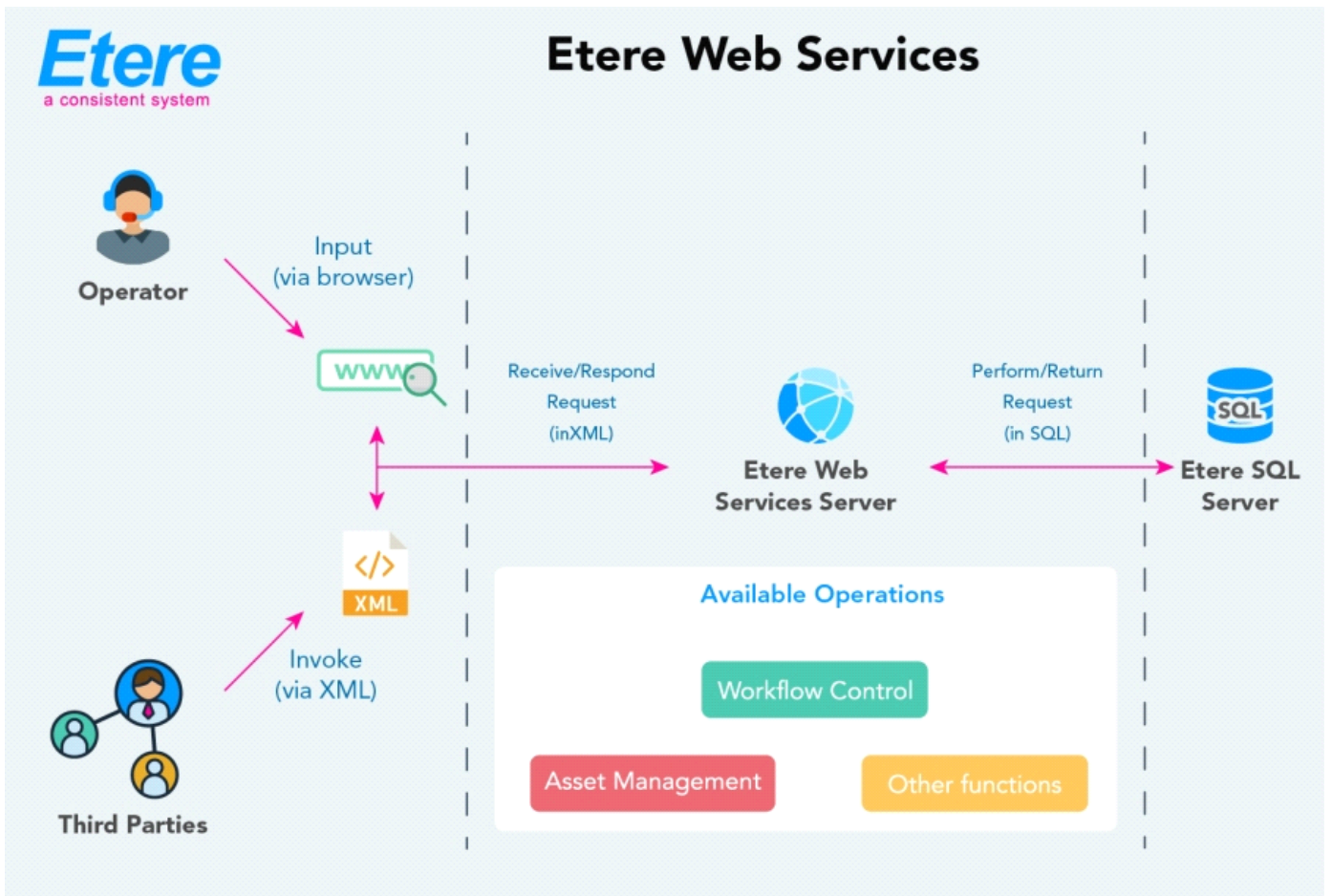


EA6753 ETERE WEB SERVICES

Interface your Etere system with the external world using a SOA compliant architecture.

Etere Web Services is the solution to interface Etere with external systems, enabling communication with the different applications in your system.



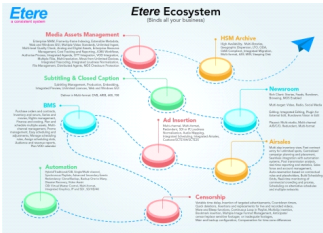
Etere Web Services are based on a **SOA** open architecture and includes functionality as a suite of interoperable services that can be used within multiple, separate systems from several business domains. Etere Web Services is the software that makes itself available over **TCP/IP** so that other programs can request information to it; the interface is described in a XML based language (WSDL) and the methods are accessed using XML messages (SOAP). In order to provide its customers with a reliable and easy-to-use application, Etere uses cutting-edge technology for web services, integrating it into its distributed architecture to bring about a quality service. In **Etere Ecosystem** suite, every user has a different permission profile to enhance security controls, so users will be allowed access to execute only the functions specifically granted to them.



SOA Technology

Service-oriented architecture (SOA) is a flexible set of design principles used during the phases of systems development and integration in computing. A system based on a SOA will package functionality as a suite of interoperable services that can be used within multiple, separate systems from several business domains.

A SOA - service oriented architecture - is essentially a collection of applications that communicates with each other; applied to Etere Web Service means that any software used in the TV channel are connected.



Etere Ecosystem

Etere Web Services integrates all applications use in your TV station for a Web-based environment and uses multiple implementation platforms. It converts all your application into a Web-application.

Etere Web Service's purpose is publishing some of the most important Etere functions (e.g. assets management, workflow control, etc) available to mainly Non-Etere programs through the use of standardized messages, thus Etere allows the TV channel to communicate its own software with Etere. It has been developed to support interoperable application-to-application interaction over a TV channel network.

```

<?xml version='1.0' encoding='utf-8'?>
<xs:schema xmlns:xsi="http://www.w3.org/2001/XMLSchema-instance" xmlns="http://www.w3.org/2001/XMLSchema" elementFormDefault="qualified" base="http://www.w3.org/2001/XMLSchema" >
  <xs:element name="GetAssetByHSM" type="GetAssetByHSM" >
    <xs:complexType base="xs:string" >
      <xs:sequence base="xs:string" >
        <xs:element name="url" type="xs:string" />
        <xs:element name="id" type="xs:string" />
        <xs:element name="hsm" type="xs:string" />
        <xs:element name="asset" type="xs:string" />
        <xs:element name="description" type="xs:string" />
      </xs:sequence>
    </xs:complexType>
  </xs:element>
</xs:schema>
  
```

XML Schema Definition and Browser Access

For each supported operation is included an XSD document (XML Schema Definition) that will enable integrating systems to automatically define the structure (elements and attributes) and data types of the functions provided by Etere Web Services.

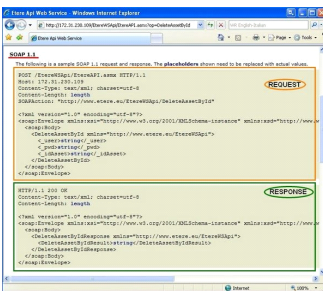
By using a web browser, you can access to the Web Services Server, where through a simple and user-friendly interface you will be able to view and carry out all the operations implemented within Web Services, in order to view the details of a specific operation and execute it as well.

```

<?xml version='1.0' encoding='utf-8'?>
<xs:schema xmlns:xsi="http://www.w3.org/2001/XMLSchema-instance" xmlns="http://www.w3.org/2001/XMLSchema" elementFormDefault="qualified" base="http://www.w3.org/2001/XMLSchema" >
  <xs:element name="GetAssetByHSM" type="GetAssetByHSM" >
    <xs:complexType base="xs:string" >
      <xs:sequence base="xs:string" >
        <xs:element name="url" type="xs:string" />
        <xs:element name="id" type="xs:string" />
        <xs:element name="hsm" type="xs:string" />
        <xs:element name="asset" type="xs:string" />
        <xs:element name="description" type="xs:string" />
      </xs:sequence>
    </xs:complexType>
  </xs:element>
</xs:schema>
  
```

Automatic XML Requests

- ◆ Able to consult the Etere's database or execute a procedure on it
- ◆ Send an XML file according to the Etere's predefined models
- ◆ Etere Web Services perform the request based on the parameters specified on the XML file and return another XML file containing the requested information



Etere Web Publishing

Etere Web Publishing key benefits includes integration with the overall workflow and the enhancement of the capabilities of Etere content management. Key features include:

- ◆ **HSM** integration to access tape libraries
- ◆ **Workflow** editing, preview and documents route
- ◆ A Digital Asset Manager able to handle any kind of contents
- ◆ A metadata-based Data Storage and Retrieval System
- ◆ Thumbnails preview of search results
- ◆ Metadata Update