

# EA8244 ETERE BUDGET AUTOMATION PACKAGE

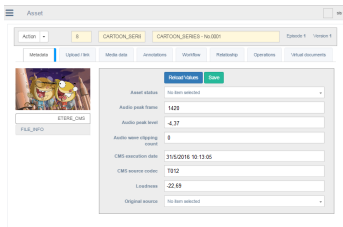
Etere delivers a budget Automation package that fulfills the requirements of a small budget TV or media company. Please view the attachment for more details on the configuration.



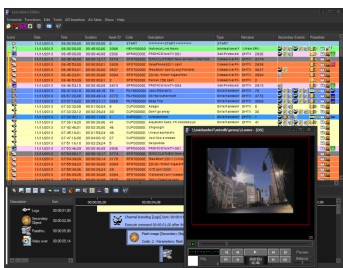
(Etere logo)



(ETERE MASTER CONTROL)



(Etereweb MAM)



(Executive Editor screen capture)

Etere introduces budget Automation, an all-in-one package that provides you with all the software tools you need for the complete management of regional TV stations and small-scale broadcast operations. It comes fully equipped with all the basic functions needed to manage the end-to-end broadcast operation. It is a reliable, compact and cost-efficient solution for smaller scale operations such as single station setups. Stay connected with the team with easy access to MAM on the web which enables real-time updates from anywhere as long as you are connected to the internet. This solution allows SD or HD playout.

♦**ETX CIB Playout (1 channel) including master control and one router control:**

Etere ETX is 4K-ready, software-based channel-in-a-box system that comes equipped with full IP in and out capabilities. Add multiple layers of graphics, squeeze, 3D graphic animations, text crawls, logos and 2D graphics easily. Integrated with master control, ETX enables a multi-functioning integrated solution, with multi-format and multi-resolution capabilities.

♦**Media Asset Management (MAM):** MAM manages all content and metadata. It allows search, store and retrieve from both web and windows GUI. Etereweb MAM provides users with fast access to search and browse the media assets and metadata from anywhere as long as they are connected to the web.

♦**Transcoder:** Etere transcoder creates low resolution proxy files from any source file.

♦**Move Media Between ETX and an External NAS Storage:** Streamlines the process of ingest, indexing, storage and retrieval of all digital assets. Use any NAS or SAN storage, one volume unlimited capacity

♦**Ingest:** One ingest that is capable of ingestion from SDI and/or IP.

♦**3 Workflows:** Workflows can be customized to fit in the environment.

♦**Up to 5 users (windows and/or web)**

♦**SQL server:** Microsoft SQL server for up to 5 users.

Budget Automation package cannot be changed, however, if you choose to upgrade to the standard package, a full refund of the budget Automation package price will be given, thus lowering the cost of ownership and making it the best option for broadcasters who need an entry-level system without restricting their plans for future expansions. With the budget Automation package, you will also get the renowned Etere quality, consistency and customer service that all of our customers have come to expect.

**To find out more, talk to us at [info@etere.com](mailto:info@etere.com)!**

**About Etere:** Founded in 1987, Etere is amongst the worldwide leaders in Media Asset Management and channel in a box software solutions for broadcasters and media companies. Its modular solutions including Airsales, Ad Insertion, playout, HSM archive, TV automation and Censorship are built with an innovative architecture, offering the best flexibility and reliability in the market. Etere is headquartered in Singapore, with a dedicated 24/7 support centre in Italy.