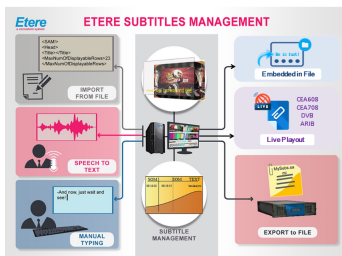


EA6763 Etere Supports Google Speech to Text for 120 Languages

Etere announces closed caption speech-to-text support for up to 120 languages with Google Cloud Speech-to-Text, this is a free add on for all users who have the speech-to-text module.



(Etere logo)



(Subtitling with Closed Captions)

As a leading industry innovator since its inception in 1987, Etere places its users at the forefront of technology with its regular updates and upgrades. **Etere Subtitles Tool for Closed Captions** is now integrated with support for Google Speech-to-Text tool, expanding its reach and enhancing its position as one of the most comprehensive subtitling tool in the market. With Etere software solutions, users are equipped with a system that future proofs their investments and is designed with the technology and system architecture to grow with their future requirements.

Etere Subtitles Tool for Closed Captions supports **Google Cloud Speech-to-Text** which includes support for up to 120 languages, with each language specified within a recognition request's language code parameters. Each language code parameter includes a BCP-47 identifier tag that identifies the language and region/country of the language. With the upgrade, operators are able to convert audio to closed caption text instantly to support a global audience base. Etere is able to support voice-to-text commands, real-time streaming and the processing of voice commands/audio transcription from call centres. Not only that, it is also able to process pre-recorded audio using Google's machine learning technology. For a full list of supported languages, please refer to the attached file.

Key Features

- ◆ Supports over 120 languages and variants (View attachment for the full list)
- ◆ Instant streams of text results
- ◆ Returns recognition of text from audio in a file
- ◆ Analysis of short and long-form audio
- ◆ Works with real-life speech with its capability to accurately transcribe proper nouns as well as format dates and numbers
- ◆ Integrated with pre-built recognition models
- ◆ Digital intelligence with automatic punctuation and word hints
- ◆ Unique words and names can be added to the library of text
- ◆ Option to filter inappropriate content



(Google Logo)

For more information, please contact please contact info@etere.com



About Etere

Etere was established in 1987 in Italy and it is amongst the worldwide leaders in Media Asset Management (MAM) and channel-in-a-box software solutions. Etere Media Enterprise Resource Planning (MERP) framework of scalable solutions are used by media enterprises across the end-to-end workflow. Etere MERP modular software including Media Asset Management (MAM), Airsales, Ad Insertion, Playout Automation, Broadcast Management System, HSM Archive, NRCS Newsroom, Broadcast Management System, Broadcast video over IP, IP Multiviewer and Live Censorship are built with an innovative architecture, offering the best flexibility and reliability in the market. Etere headquarters is in Singapore and it has a 24/7 support centre in Italy. info@etere.com



About Google Cloud Speech-to-Text

Google Cloud Speech-to-Text enables developers to convert audio to text by applying powerful neural network models in an easy to use API. The API recognizes 120 languages and variants, to support your global user base. You can enable voice command-and-control, transcribe audio from call centers, and more. It can process real-time streaming or pre-recorded audio, using Google's machine learning technology.

<https://cloud.google.com/speech-to-text/>