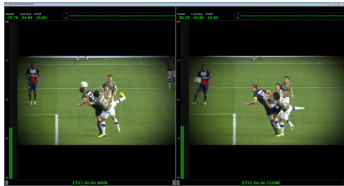


EA6778 ETERE ETX-L LIVE LOUDNESS CONTROL

Etere IP Multiviewer, Etere ETX and Etere AD insertion can be equipped with live loudness control with real-time updates. It is conforming to ITU-1770-3.



(loudness)

It functions as both a loudness measurement and real time audio leveling. Packed with features to automatically detect loudness problems including auto jumps between programs and commercials as well as signal handling for all worldwide recommendations for loudness measurement, Etere automatic loudness control is ideal to include ALC in your workflow, production and post-production workflows. This feature is available on

- ◆ Etere ETX-M Multiviewer
- ◆ Etere ETX
- ◆ Etere AD insertion
- ◆ Etere Nunzio Playout

This feature maintains a stable playout loudness without pre-leveling material and normalizes files during Etere Transcoding.

The computer will use the following algorithms

- ◆ ITU-1770
- ◆ ITU-1770-2
- ◆ ITU-1770-3

With advanced loudness control, using ETX advanced multi-band audio processing, this is a highly flexible processor with excellent performance for vocal tracks.

Etere
a consistent system

About Etere

Since its beginnings in 1987, Etere has been preparing users to be ready for the future. Etere is a worldwide provider of broadcast and media software solutions backed by its mark of excellence in system design, flexibility and reliability. Engineered in Singapore, the revolutionary concept of Etere Ecosystem promotes real-time collaborations and enhances operational efficiency across the entire enterprise. Etere Ecosystem software solutions including Media Asset Management, Channel-in-a-Box, Newsroom, Ad Insertion, Airsales, Automation, Broadcast Management System, Censorship, HSM Archive, Logging, OTT/VOD Delivery, Radio-Live, Subtitling and Captioning software are built with an integrative Web and Windows architecture that are customisable to fit perfectly in any system. Etere system is developed by 4 different groups in different countries to ensure reliability and quality. Etere delivers on its service excellence commitment with its dedicated team and a 24/7 worldwide support. Its portfolio of digital technologies and market-proven remote/on-site solutions including consultancy, training, installation and demonstrations are ready to run with your business no matter where you are. Etere enhances your adaptability for the future and empowers you with the software tools to drive your business to greater heights. www.etere.com